

COLLINS HOUSE

MELBOURNE



FLOORPLATES



LEVEL 3 COLLINS TERRACE



01. LOUNGE ROOM
02. KITCHEN

03. OVEN
04. FRIDGE

05. BARBECUE
06. TERRACE

07. OUTDOOR DINING
08. OUTDOOR LOUNGE

09. FEATURE PLANTS

COLLINS HOUSE

MELBOURNE

APARTMENT 02

TYPE CR-02
2 BED, 2 BATH
INTERNAL: 65.7SQM
TOTAL: 65.7SQM

APARTMENT 03

TYPE CR-03
1 BED, 1 BATH
INTERNAL: 48.4SQM
TOTAL: 48.4SQM

APARTMENT 04

TYPE CR-04
1 BED, 1 BATH
INTERNAL: 49.5SQM
TOTAL: 49.5SQM

APARTMENT 05

TYPE CR-05
1 BED, 1 BATH
INTERNAL: 48.3SQM
TOTAL: 48.3SQM

APARTMENT 06

TYPE CR-06
2 BED, 2 BATH
INTERNAL: 66.0SQM
TOTAL: 66.0SQM



COLLINS STREET

APARTMENT 01

TYPE CR-01
2 BED, 1 BATH
INTERNAL: 59.2SQM
EXTERNAL: 6.3SQM
TOTAL: 65.8SQM

APARTMENT 07

TYPE CR-07
2 BED, 1 BATH
INTERNAL: 59.0SQM
EXTERNAL: 6.3SQM
TOTAL: 65.3SQM

COLLINS RESIDENCE — LEVEL 14 - 21

Disclaimer:

These plans are at design development stage and are provided for marketing purposes only. Design coordination with consultants is not complete in either the individual apartments or the overall building. Building tolerances; acoustic, thermal and decorative requirements; and facade interface details may impact layout and alter room dimensions. Furniture shown is for layout purposes only and not indicative of final selection. Pendant and floor lights indicated on plan are not included in the contract of sale. Operable window locations and sizes are indicative only and subject to change. Any areas shown or implied are indicative only and have been measured in accordance with the Property Council Australia guideline for measuring residential spaces.



NOT TO SCALE

COLLINS HOUSE

MELBOURNE

APARTMENT 02

TYPE CR-02
2 BED, 2 BATH
INTERNAL: 65.7SQM
TOTAL: 65.7SQM

APARTMENT 03

TYPE CR-03
1 BED, 1 BATH
INTERNAL: 48.4SQM
TOTAL: 48.4SQM

APARTMENT 04

TYPE CR-04
1 BED, 1 BATH
INTERNAL: 49.5SQM
TOTAL: 49.5SQM

APARTMENT 05

TYPE CR-05
1 BED, 1 BATH
INTERNAL: 48.3SQM
TOTAL: 48.3SQM

APARTMENT 06

TYPE CR-06
2 BED, 2 BATH
INTERNAL: 66.0SQM
TOTAL: 66.0SQM



APARTMENT 01

TYPE CR-08
2 BED, 1 BATH
INTERNAL: 63.3SQM
EXTERNAL: 2.3SQM
TOTAL: 65.6SQM

APARTMENT 07

TYPE CR-09
2 BED, 2 BATH
INTERNAL: 71.8SQM
EXTERNAL: 2.1SQM
TOTAL: 73.9SQM

COLLINS RESIDENCE — LEVEL 22 – 45

Disclaimer:

These plans are at design development stage and are provided for marketing purposes only. Design coordination with consultants is not complete in either the individual apartments or the overall building. Building tolerances; acoustic, thermal and decorative requirements; and facade interface details may impact layout and alter room dimensions. Furniture shown is for layout purposes only and not indicative of final selection. Pendant and floor lights indicated on plan are not included in the contract of sale. Operable window locations and sizes are indicative only and subject to change. Any areas shown or implied are indicative only and have been measured in accordance with the Property Council Australia guideline for measuring residential spaces.



NOT TO SCALE

COLLINS HOUSE

MELBOURNE

APARTMENT 02

TYPE CC-02
3 BED, 3 BATH
INTERNAL: 109.5SQM
TOTAL: 109.5SQM

APARTMENT 03

TYPE CC-03
1 BED, 1 BATH
INTERNAL: 55.4SQM
TOTAL: 55.4SQM

APARTMENT 04

TYPE CC-04
3 BED, 3 BATH
INTERNAL: 116.5SQM
TOTAL: 116.5SQM



APARTMENT 01

TYPE CC-01
2 BED, 2 BATH
INTERNAL: 69.9SQM
TOTAL: 69.9SQM

APARTMENT 05

TYPE CC-05
2 BED, 2 BATH
INTERNAL: 75.6SQM
TOTAL: 75.6SQM

COLLINS CLUB — LEVEL 46 - 57

Disclaimer:

These plans are at design development stage and are provided for marketing purposes only. Design coordination with consultants is not complete in either the individual apartments or the overall building. Building tolerances; acoustic, thermal and decorative requirements; and facade interface details may impact layout and alter room dimensions. Furniture shown is for layout purposes only and not indicative of final selection. Pendant and floor lights indicated on plan are not included in the contract of sale. Operable window locations and sizes are indicative only and subject to change. Any areas shown or implied are indicative only and have been measured in accordance with the Property Council Australia guideline for measuring residential spaces.



NOT TO SCALE

COLLINS HOUSE

MELBOURNE

APARTMENT 01

TYPE CC-06

3 BED, 3 BATH, 1 STUDY, 1 POWDER

INTERNAL: 208.8SQM

TOTAL: 208.8SQM

APARTMENT 02

TYPE CC-07

3 BED, 3 BATH, 1 STUDY, 1 POWDER

INTERNAL: 220.5SQM

TOTAL: 220.5SQM



COLLINS CLUB — LEVEL 58-60

Disclaimer:

These plans are at design development stage and are provided for marketing purposes only. Design coordination with consultants is not complete in either the individual apartments or the overall building. Building tolerances; acoustic, thermal and decorative requirements; and facade interface details may impact layout and alter room dimensions. Furniture shown is for layout purposes only and not indicative of final selection. Pendant and floor lights indicated on plan are not included in the contract of sale. Operable window locations and sizes are indicative only and subject to change. Any areas shown or implied are indicative only and have been measured in accordance with the Property Council Australia guideline for measuring residential spaces.



NOT TO SCALE

FLOORPLANS



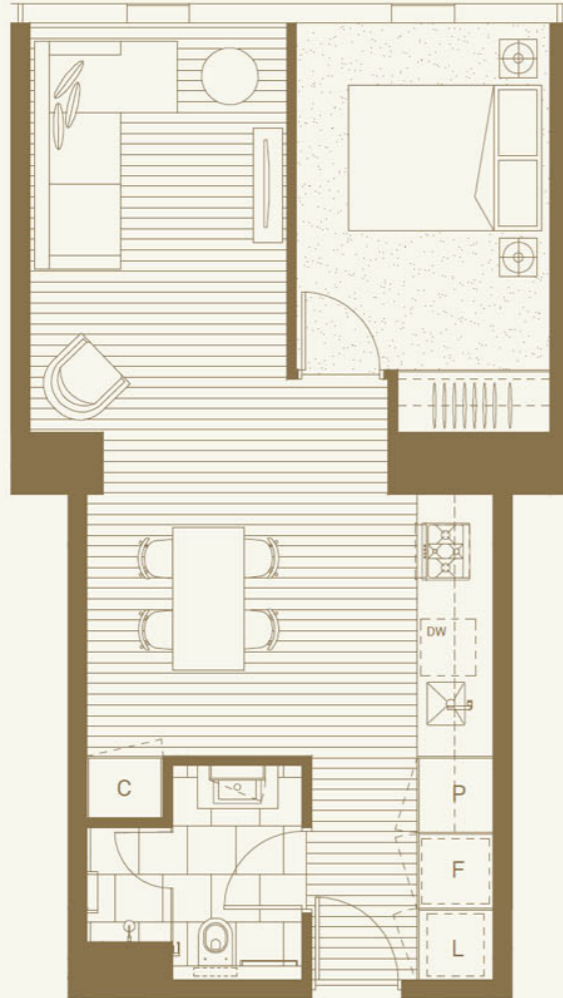
COLLINS HOUSE

MELBOURNE

1 BED, 1 BATH

APARTMENT 04
TYPE CR-04

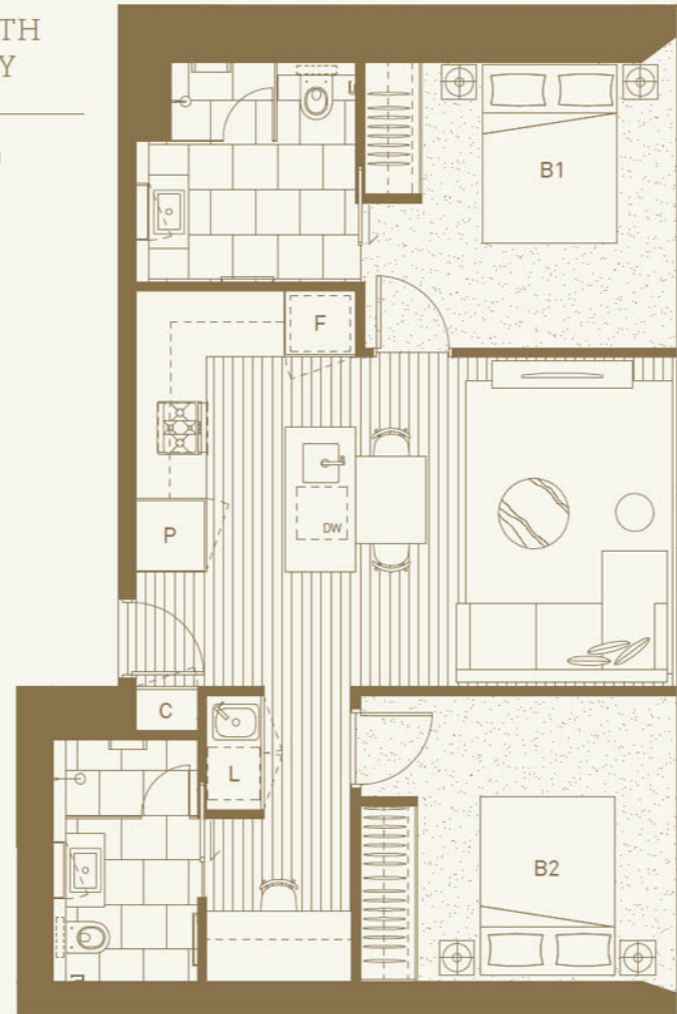
1504, 1604, 1704, 1804, 1904, 2104, 2204,
2304, 2404, 2504, 2604, 2804, 2904, 3004,
3104, 3204, 3304, 3404, 3504, 3604, 3704,
3804, 3904, 4004, 4104, 4204, 4304, 4404



2 BED, 2 BATH
& 1 STUDY

APARTMENT 01
TYPE CH-04

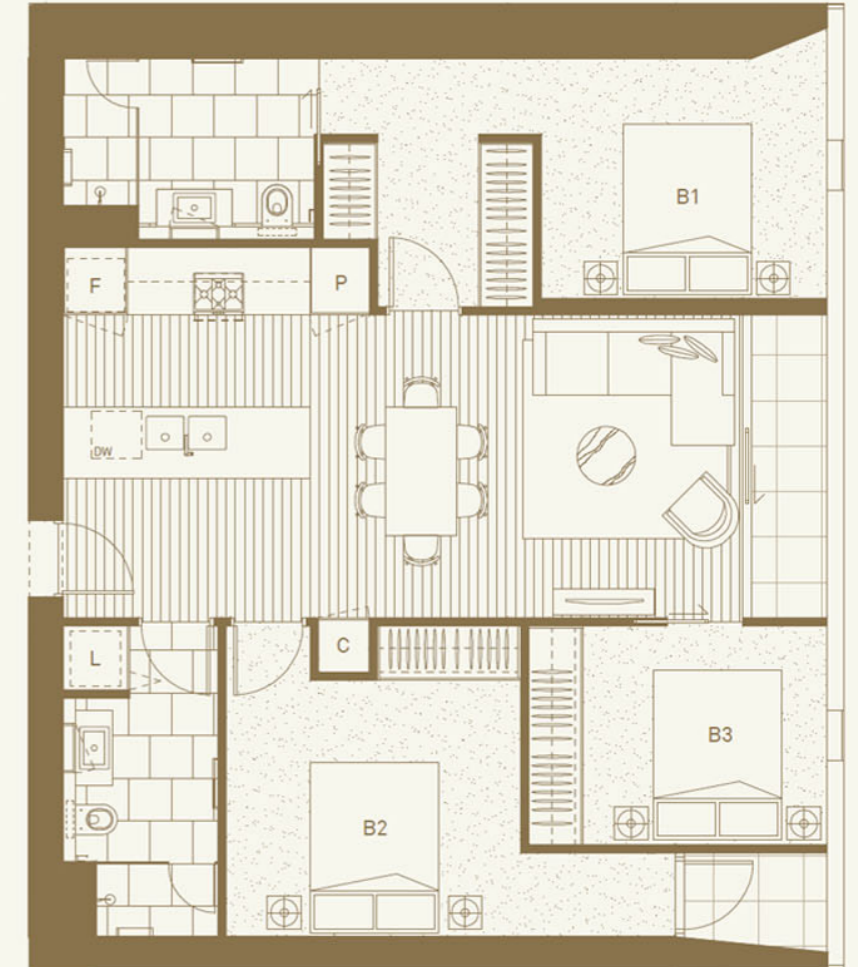
801, 901



3 BED, 2 BATH

APARTMENT 02
TYPE CH-07

1402



COLLINS HOUSE

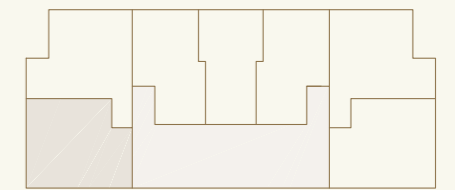
MELBOURNE

2 BED, 1 BATH

APARTMENT 01
TYPE CR-01

1401, 1501, 1601, 1701,
1801, 1901, 2001, 2101

INTERNAL: 59.2SQM
EXTERNAL: 6.3SQM
TOTAL: 65.8SQM



COLLINS STREET



Disclaimer:

These plans are at design development stage and are provided for marketing purposes only. Design coordination with consultants is not complete in either the individual apartments or the overall building. Building tolerances; acoustic, thermal and decorative requirements; and facade interface details may impact layout and alter room dimensions. Furniture shown is for layout purposes only and not indicative of final selection. Pendant and floor lights indicated on plan are not included in the contract of sale. Operable window locations and sizes are indicative only and subject to change. Any areas shown or implied are indicative only and have been measured in accordance with the Property Council Australia guideline for measuring residential spaces.



NOT TO SCALE

COLLINS HOUSE

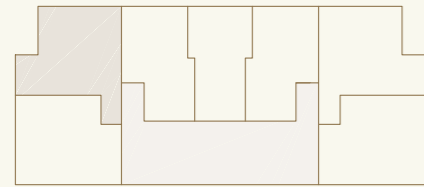
MELBOURNE

2 BED, 2 BATH

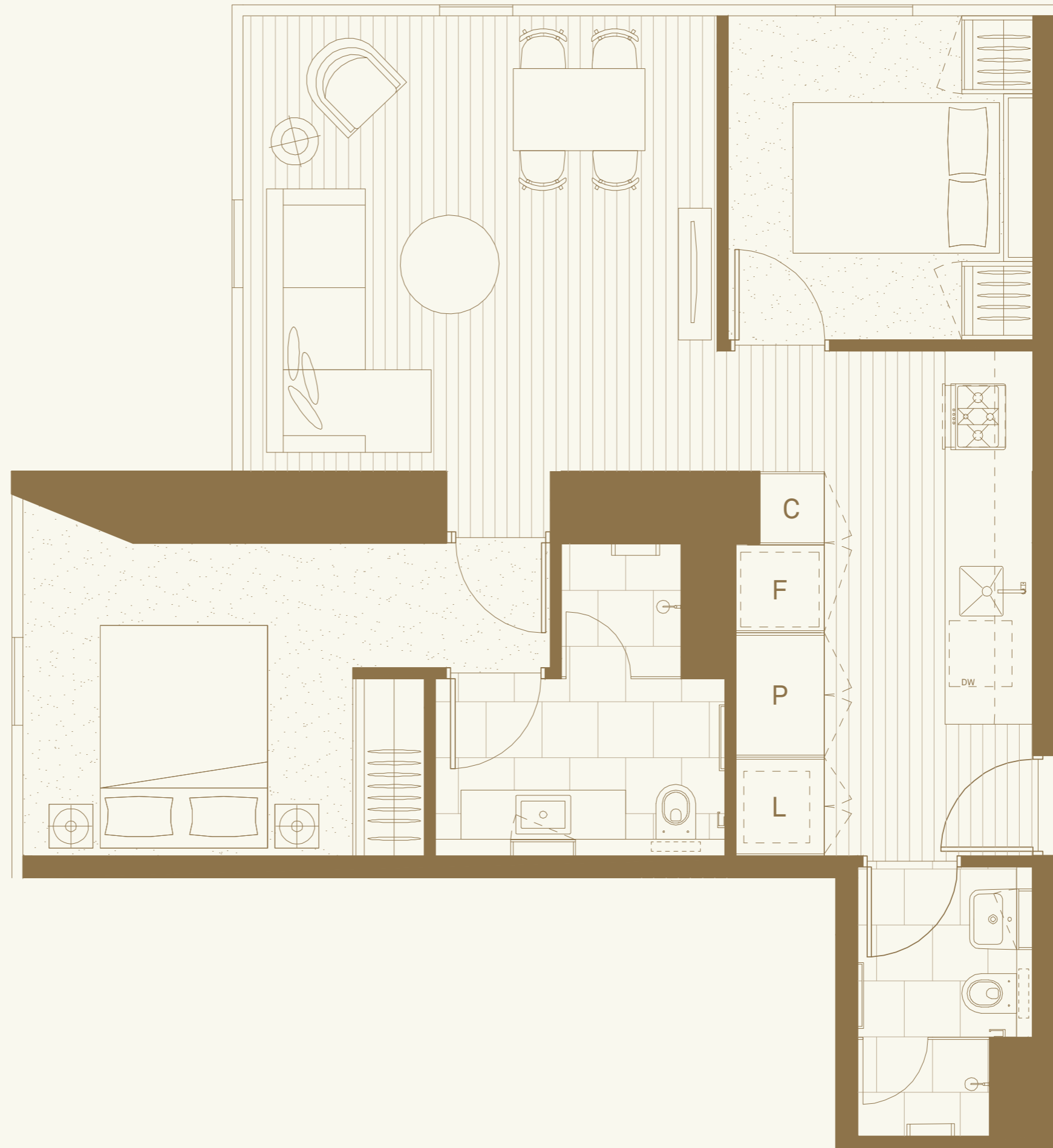
APARTMENT 02
TYPE CR-02

1402, 1502, 1602, 1702, 1802, 1902,
2002, 2102, 2202, 2302, 2402, 2502, 2602,
2702, 2802, 2902, 3102, 3202, 3302, 3402,
3502, 3602, 3702, 3802, 3902, 4002, 4102,
4202, 4302, 4402, 4502

INTERNAL: 65.7SQM
TOTAL: 65.7SQM



COLLINS STREET



Disclaimer:

These plans are at design development stage and are provided for marketing purposes only. Design coordination with consultants is not complete in either the individual apartments or the overall building. Building tolerances; acoustic, thermal and decorative requirements; and facade interface details may impact layout and alter room dimensions. Furniture shown is for layout purposes only and not indicative of final selection. Pendant and floor lights indicated on plan are not included in the contract of sale. Operable window locations and sizes are indicative only and subject to change. Any areas shown or implied are indicative only and have been measured in accordance with the Property Council Australia guideline for measuring residential spaces.



NOT TO SCALE

COLLINS HOUSE

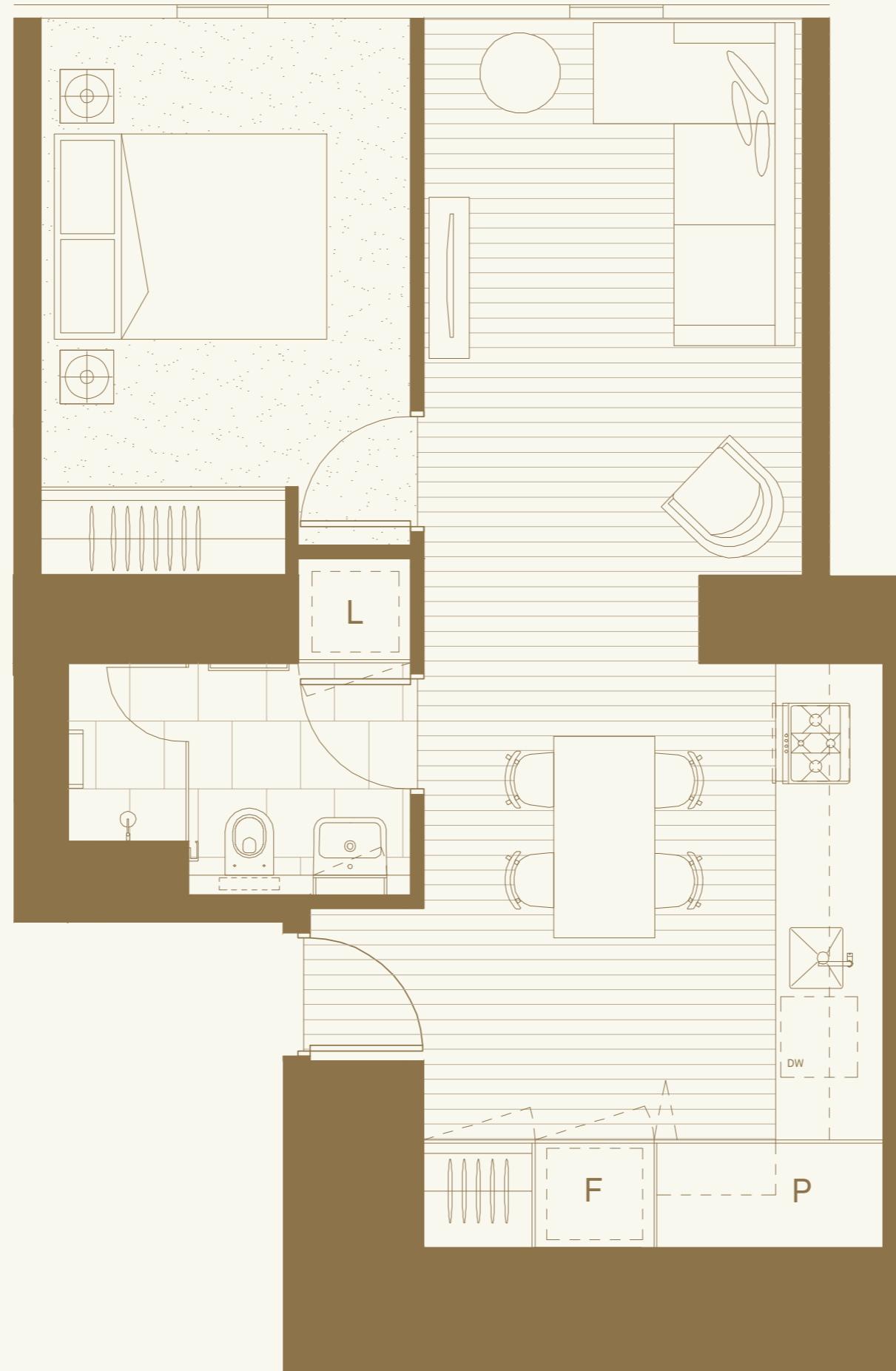
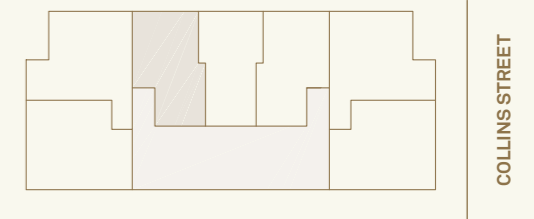
MELBOURNE

1 BED, 1 BATH

APARTMENT 03
TYPE CR-03

1403, 1503, 1603, 1703, 1803, 1903,
2003, 2103, 2203, 2303, 2403, 2503, 2603,
2703, 2803, 2903, 3103, 3203, 3303, 3403,
3503, 3603, 3703, 3803, 3903, 4003, 4103,
4203, 4303, 4403, 4503

INTERNAL: 48.4SQM
TOTAL: 48.4SQM



Disclaimer:

These plans are at design development stage and are provided for marketing purposes only. Design coordination with consultants is not complete in either the individual apartments or the overall building. Building tolerances; acoustic, thermal and decorative requirements; and facade interface details may impact layout and alter room dimensions. Furniture shown is for layout purposes only and not indicative of final selection. Pendant and floor lights indicated on plan are not included in the contract of sale. Operable window locations and sizes are indicative only and subject to change. Any areas shown or implied are indicative only and have been measured in accordance with the Property Council Australia guideline for measuring residential spaces.



NOT TO SCALE

COLLINS HOUSE

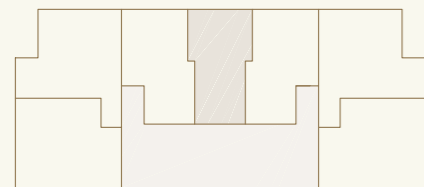
MELBOURNE

1 BED, 1 BATH

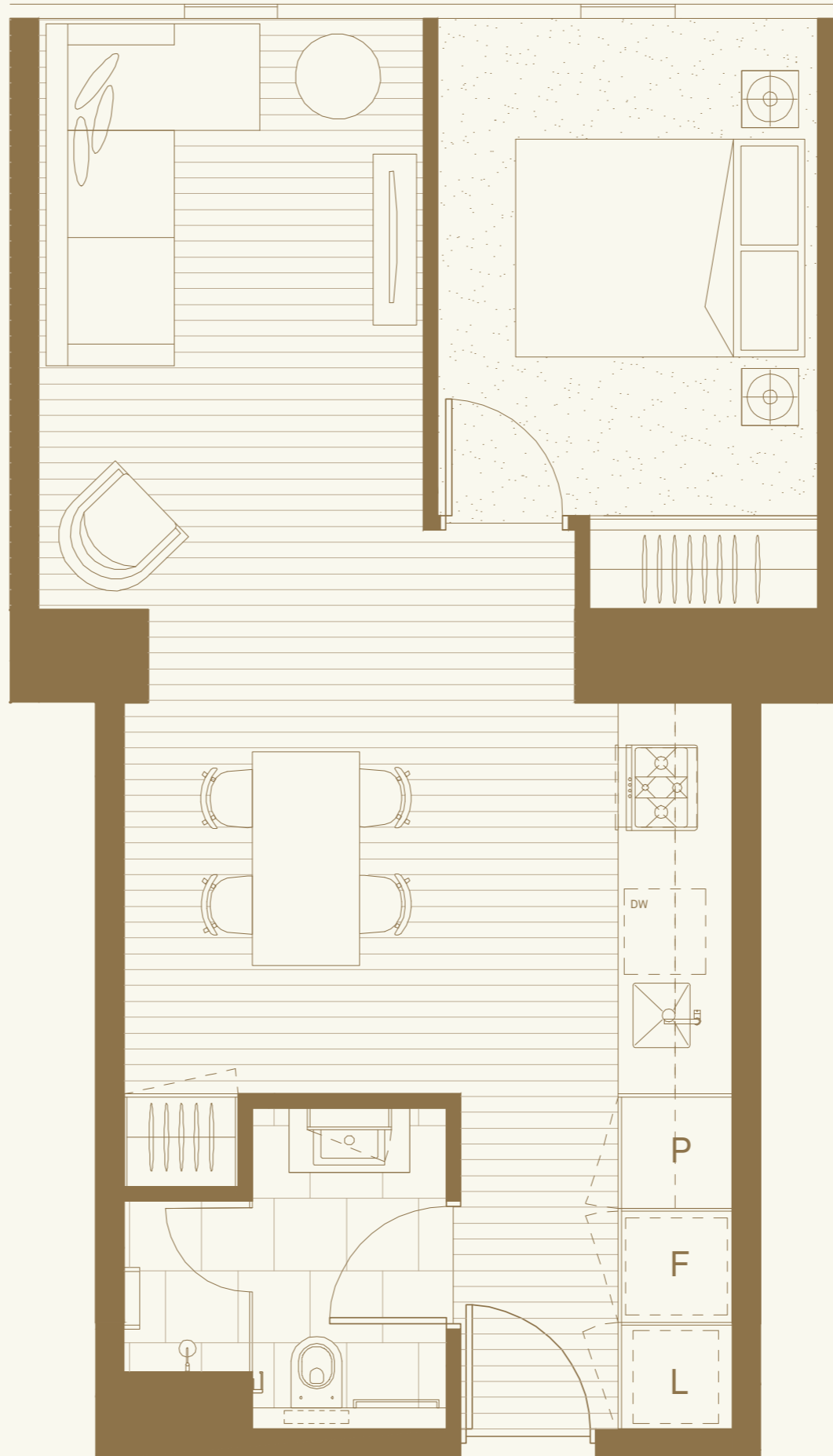
APARTMENT 04
TYPE CR-04

1404, 1504, 1604, 1704, 1804, 1904,
2004, 2104, 2204, 2304, 2404, 2504, 2604,
2704, 2804, 2904, 3104, 3204, 3304, 3404,
3504, 3604, 3704, 3804, 3904, 4004, 4104,
4204, 4304, 4404, 4504

INTERNAL: 49.5SQM
TOTAL: 49.5SQM



COLLINS STREET



Disclaimer:

These plans are at design development stage and are provided for marketing purposes only. Design coordination with consultants is not complete in either the individual apartments or the overall building. Building tolerances; acoustic, thermal and decorative requirements; and facade interface details may impact layout and alter room dimensions. Furniture shown is for layout purposes only and not indicative of final selection. Pendant and floor lights indicated on plan are not included in the contract of sale. Operable window locations and sizes are indicative only and subject to change. Any areas shown or implied are indicative only and have been measured in accordance with the Property Council Australia guideline for measuring residential spaces.



NOT TO SCALE

COLLINS HOUSE

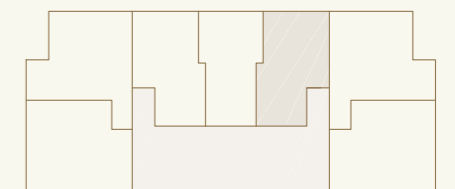
MELBOURNE

1 BED, 1 BATH

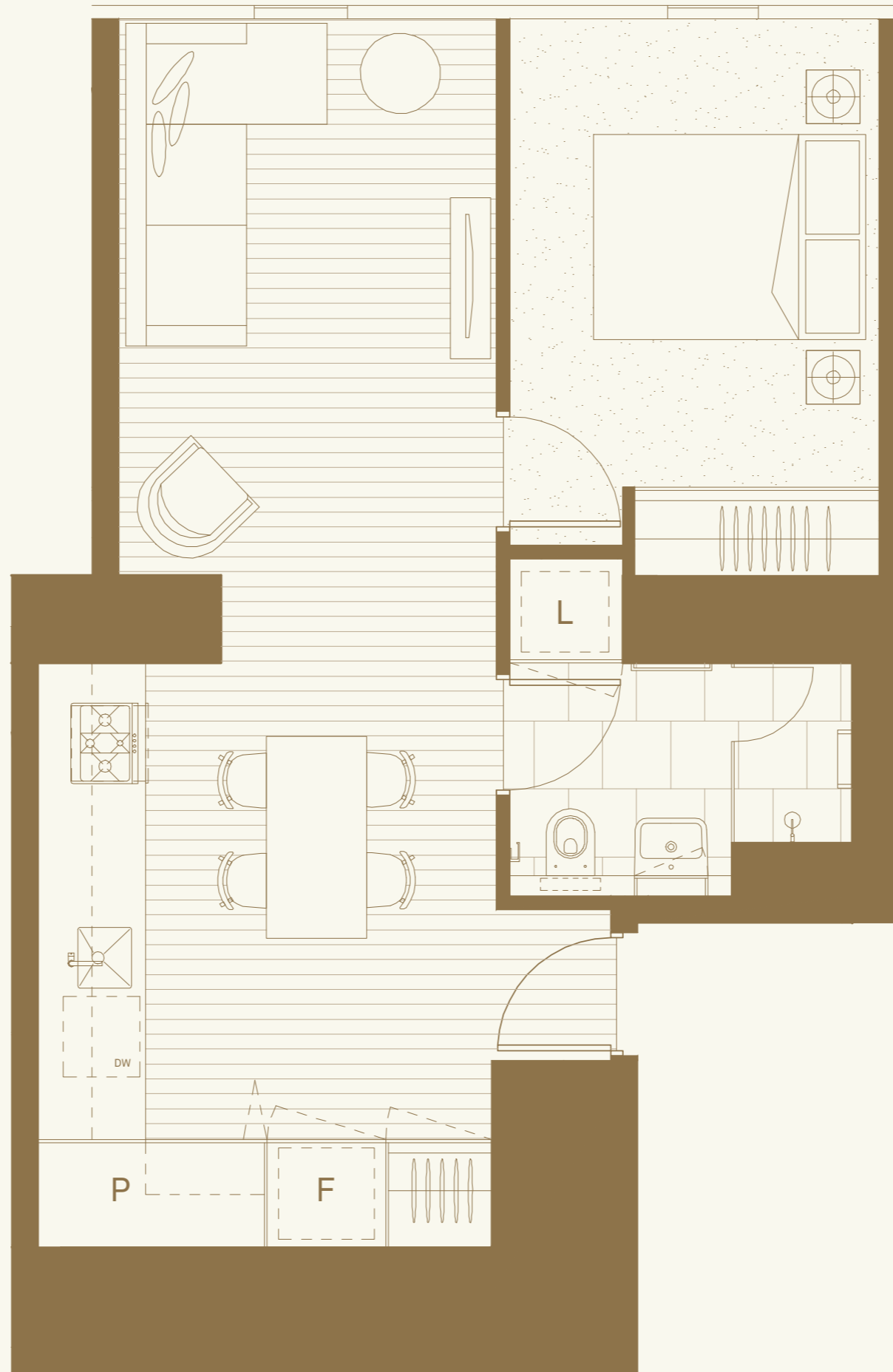
APARTMENT 05
TYPE CR-05

1405, 1505, 1605, 1705, 1805, 1905,
2005, 2105, 2205, 2305, 2405, 2505, 2605,
2705, 2805, 2905, 3105, 3205, 3305, 3405,
3505, 3605, 3705, 3805, 3905, 4005, 4105,
4205, 4305, 4405, 4505

INTERNAL: 48.3SQM
TOTAL: 48.3SQM



COLLINS STREET



Disclaimer:

These plans are at design development stage and are provided for marketing purposes only. Design coordination with consultants is not complete in either the individual apartments or the overall building. Building tolerances; acoustic, thermal and decorative requirements; and facade interface details may impact layout and alter room dimensions. Furniture shown is for layout purposes only and not indicative of final selection. Pendant and floor lights indicated on plan are not included in the contract of sale. Operable window locations and sizes are indicative only and subject to change. Any areas shown or implied are indicative only and have been measured in accordance with the Property Council Australia guideline for measuring residential spaces.



NOT TO SCALE

COLLINS HOUSE

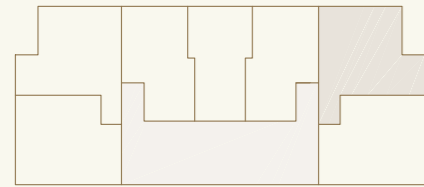
MELBOURNE

2 BED, 2 BATH

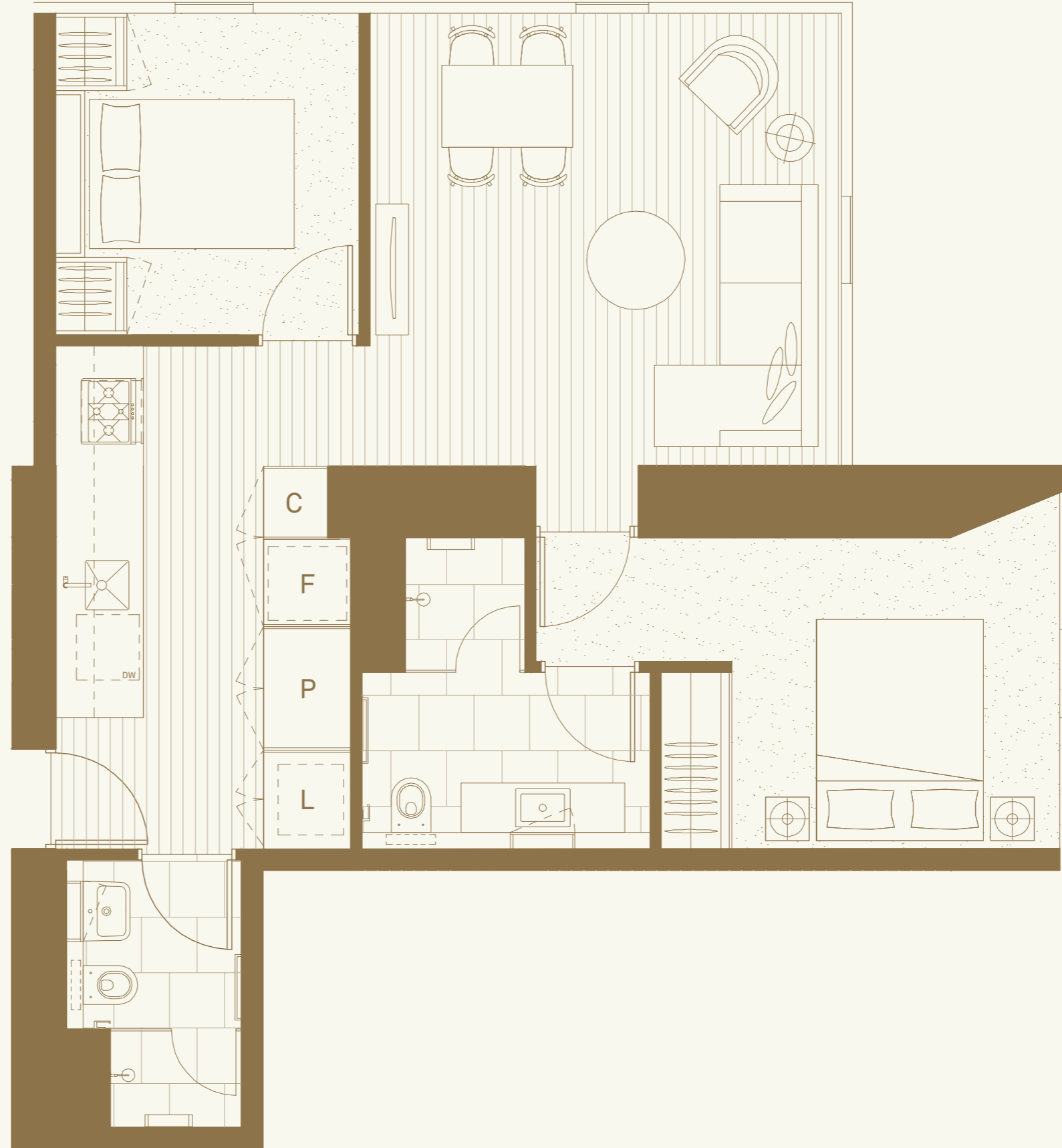
APARTMENT 06
TYPE CR-06

1406, 1506, 1606, 1706, 1806, 1906,
2006, 2106, 2206, 2306, 2406, 2506, 2606,
2706, 2806, 2906, 3106, 3206, 3306, 3406,
3506, 3606, 3706, 3806, 3906, 4006, 4106,
4206, 4306, 4406, 4506

INTERNAL: 66.0SQM
TOTAL: 66.0SQM



COLLINS STREET



Disclaimer:

These plans are at design development stage and are provided for marketing purposes only. Design coordination with consultants is not complete in either the individual apartments or the overall building. Building tolerances; acoustic, thermal and decorative requirements; and facade interface details may impact layout and alter room dimensions. Furniture shown is for layout purposes only and not indicative of final selection. Pendant and floor lights indicated on plan are not included in the contract of sale. Operable window locations and sizes are indicative only and subject to change. Any areas shown or implied are indicative only and have been measured in accordance with the Property Council Australia guideline for measuring residential spaces.



NOT TO SCALE

COLLINS HOUSE

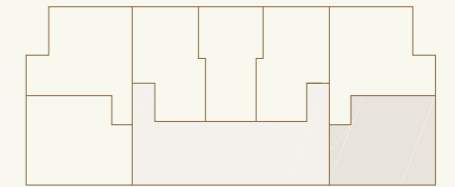
MELBOURNE

2 BED, 1 BATH

APARTMENT 07
TYPE CR-07

1407, 1507, 1607, 1707,
1807, 1907, 2007, 2107

INTERNAL: 59.0SQM
EXTERNAL: 6.3SQM
TOTAL: 65.3SQM



Disclaimer:

These plans are at design development stage and are provided for marketing purposes only. Design coordination with consultants is not complete in either the individual apartments or the overall building. Building tolerances; acoustic, thermal and decorative requirements; and facade interface details may impact layout and alter room dimensions. Furniture shown is for layout purposes only and not indicative of final selection. Pendant and floor lights indicated on plan are not included in the contract of sale. Operable window locations and sizes are indicative only and subject to change. Any areas shown or implied are indicative only and have been measured in accordance with the Property Council Australia guideline for measuring residential spaces.



NOT TO SCALE

COLLINS HOUSE

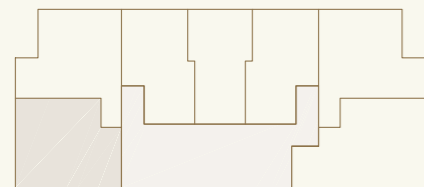
MELBOURNE

2 BED, 1 BATH

APARTMENT 01
TYPE CR-08

2201, 2301, 2401, 2501, 2601, 2701,
2801, 2901, 3101, 3201, 3301, 3401, 3501,
3601, 3701, 3801, 3901, 4001, 4101, 4201,
4301, 4401, 4501

INTERNAL: 63.3SQM
EXTERNAL: 2.3SQM
TOTAL: 65.6SQM



COLLINS STREET



Disclaimer:

These plans are at design development stage and are provided for marketing purposes only. Design coordination with consultants is not complete in either the individual apartments or the overall building. Building tolerances; acoustic, thermal and decorative requirements; and facade interface details may impact layout and alter room dimensions. Furniture shown is for layout purposes only and not indicative of final selection. Pendant and floor lights indicated on plan are not included in the contract of sale. Operable window locations and sizes are indicative only and subject to change. Any areas shown or implied are indicative only and have been measured in accordance with the Property Council Australia guideline for measuring residential spaces.



NOT TO SCALE

COLLINS HOUSE

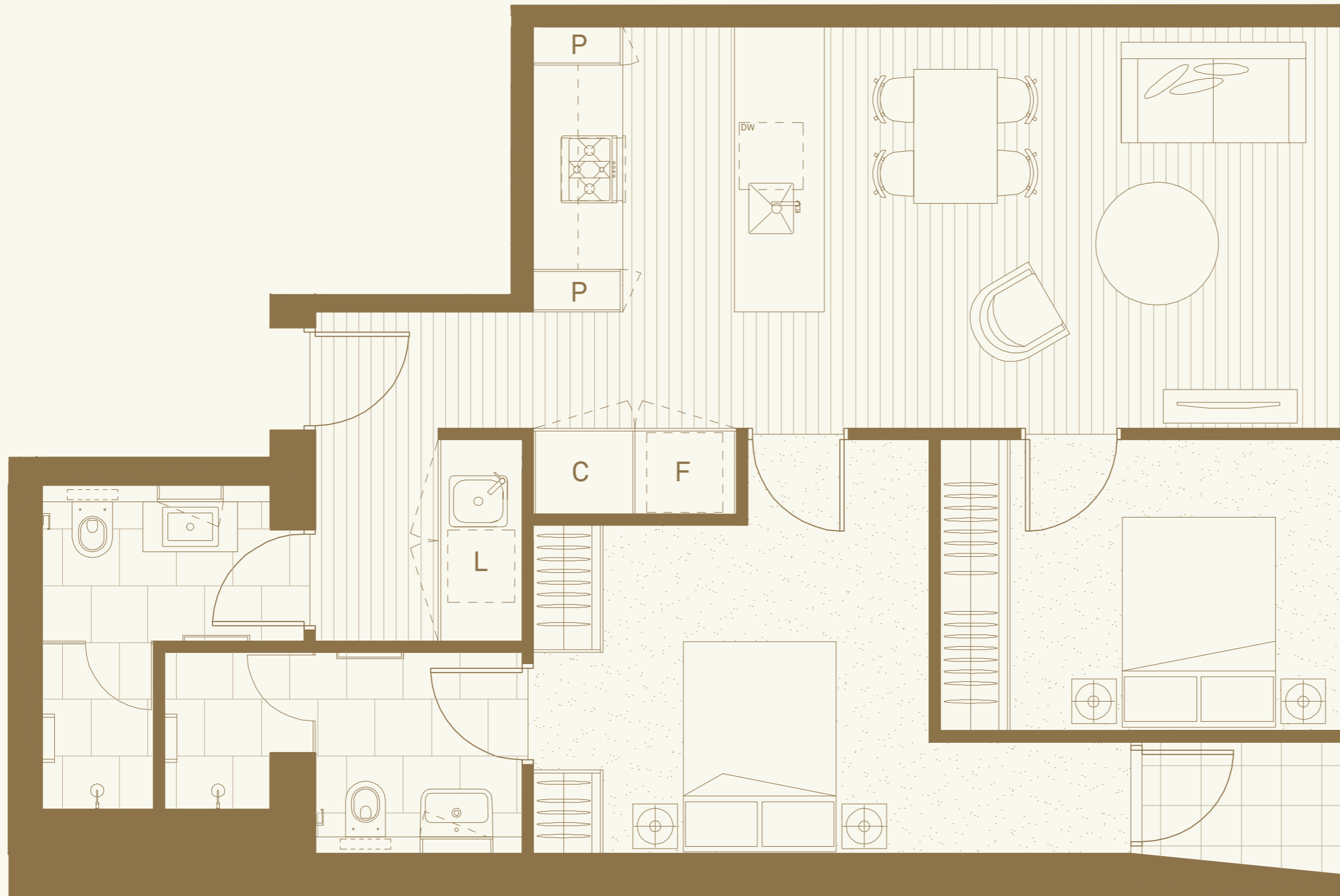
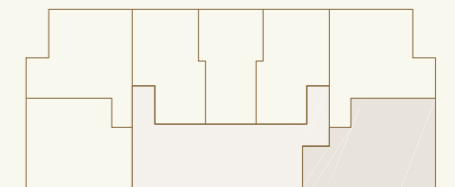
MELBOURNE

2 BED, 2 BATH

APARTMENT 07
TYPE CR-09

2207, 2307, 2407, 2507, 2607, 2707,
2807, 2907, 3107, 3207, 3307, 3407, 3507,
3607, 3707, 3807, 3907, 4007, 4107, 4207,
4307, 4407, 4507

INTERNAL: 71.8SQM
EXTERNAL: 2.1SQM
TOTAL: 73.9SQM



Disclaimer:

These plans are at design development stage and are provided for marketing purposes only. Design coordination with consultants is not complete in either the individual apartments or the overall building. Building tolerances; acoustic, thermal and decorative requirements; and facade interface details may impact layout and alter room dimensions. Furniture shown is for layout purposes only and not indicative of final selection. Pendant and floor lights indicated on plan are not included in the contract of sale. Operable window locations and sizes are indicative only and subject to change. Any areas shown or implied are indicative only and have been measured in accordance with the Property Council Australia guideline for measuring residential spaces.



NOT TO SCALE

COLLINS HOUSE

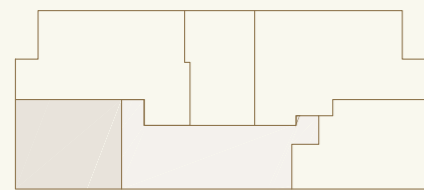
MELBOURNE

2 BED, 2 BATH

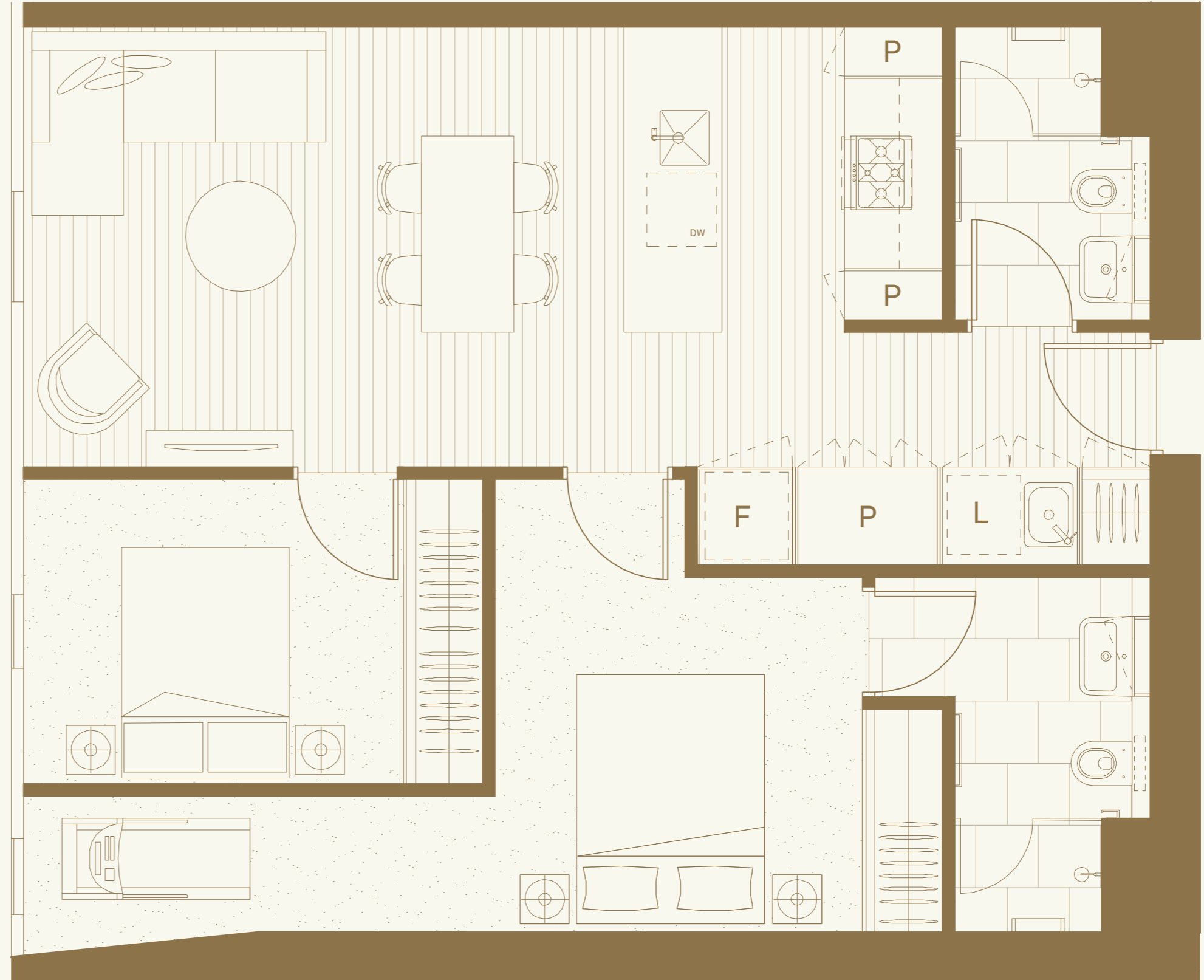
APARTMENT 01
TYPE CC-01

4601, 4701, 4801, 4901,
5001, 5101, 5201, 5301, 5401,
5501, 5601, 5701

INTERNAL: 69.9SQM
TOTAL: 69.9SQM



COLLINS STREET



Disclaimer:

These plans are at design development stage and are provided for marketing purposes only. Design coordination with consultants is not complete in either the individual apartments or the overall building. Building tolerances; acoustic, thermal and decorative requirements; and facade interface details may impact layout and alter room dimensions. Furniture shown is for layout purposes only and not indicative of final selection. Pendant and floor lights indicated on plan are not included in the contract of sale. Operable window locations and sizes are indicative only and subject to change. Any areas shown or implied are indicative only and have been measured in accordance with the Property Council Australia guideline for measuring residential spaces.



NOT TO SCALE

COLLINS HOUSE

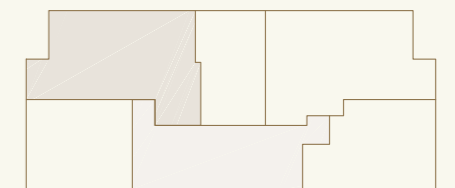
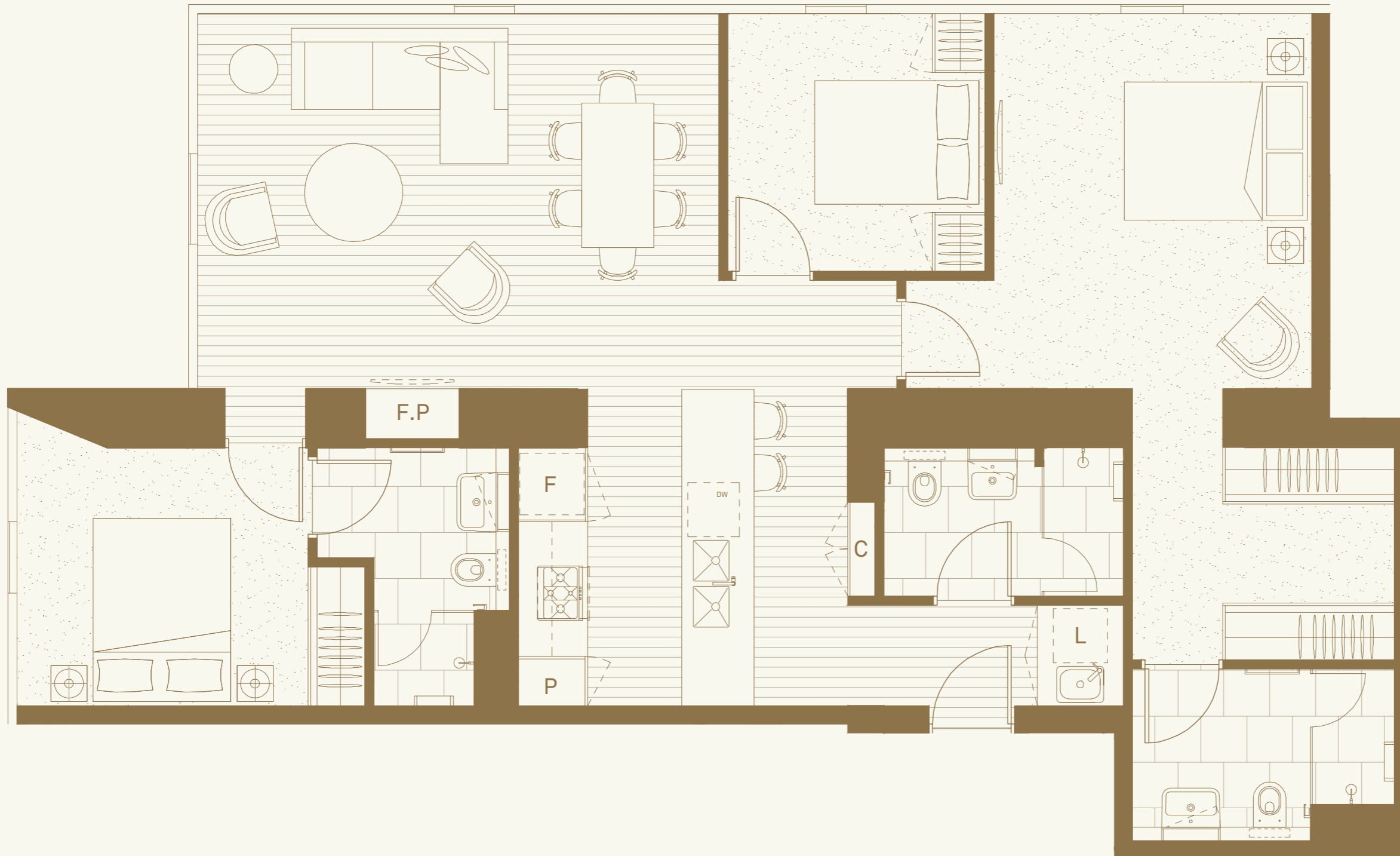
MELBOURNE

3 BED, 3 BATH

APARTMENT 02
TYPE CC-02

4602, 4702, 4802, 4902,
5002, 5102, 5202, 5302, 5402,
5502, 5602, 5702

INTERNAL: 109.5SQM
TOTAL: 109.5SQM



COLLINS STREET

Disclaimer:

These plans are at design development stage and are provided for marketing purposes only. Design coordination with consultants is not complete in either the individual apartments or the overall building. Building tolerances; acoustic, thermal and decorative requirements; and facade interface details may impact layout and alter room dimensions. Furniture shown is for layout purposes only and not indicative of final selection. Pendant and floor lights indicated on plan are not included in the contract of sale. Operable window locations and sizes are indicative only and subject to change. Any areas shown or implied are indicative only and have been measured in accordance with the Property Council Australia guideline for measuring residential spaces.



NOT TO SCALE

COLLINS HOUSE

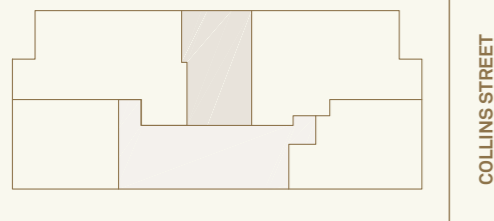
MELBOURNE

1 BED, 1 BATH

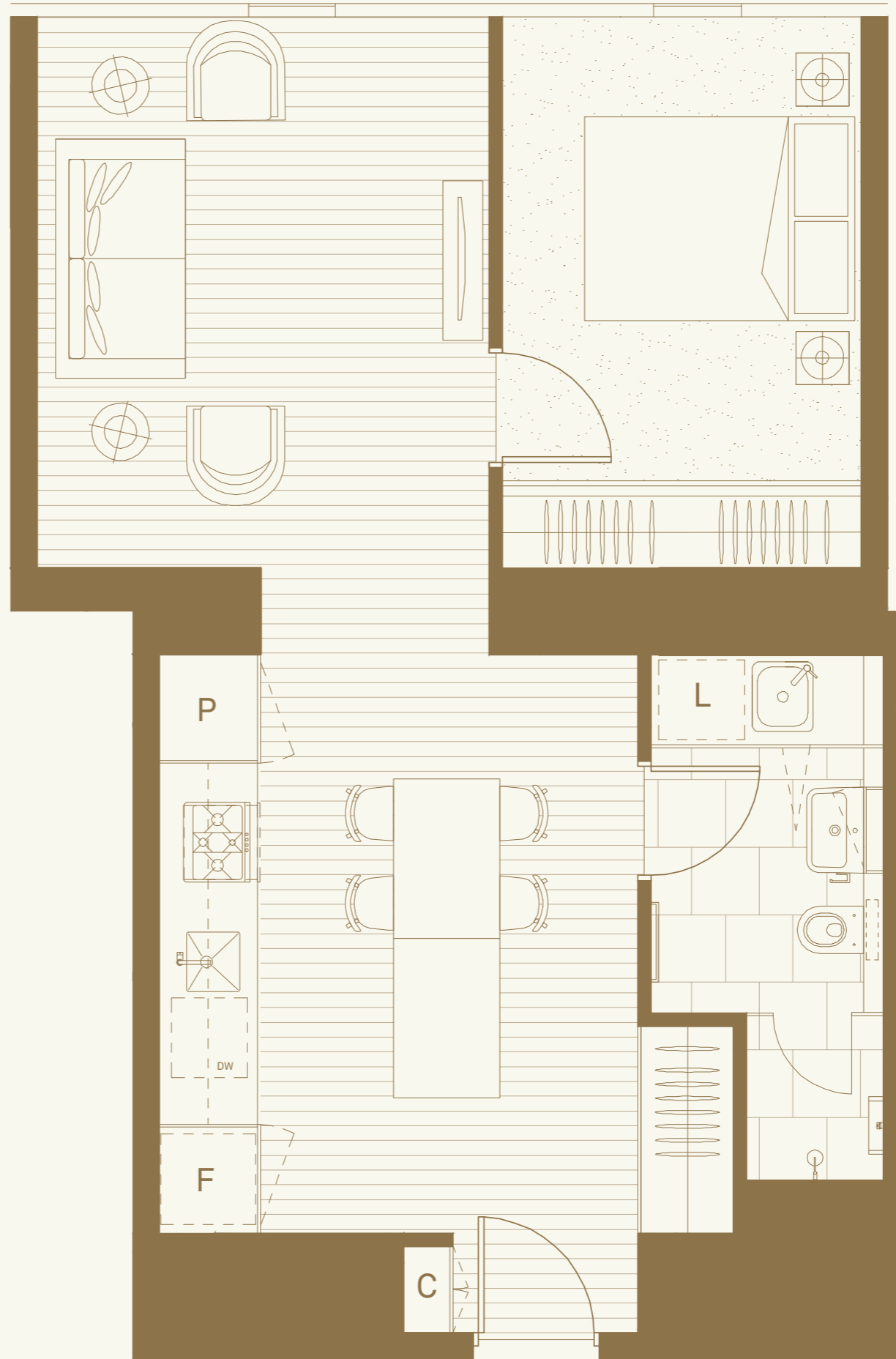
APARTMENT 03
TYPE CC-03

4603, 4703, 4803, 4903,
5003, 5103, 5203, 5303, 5403,
5503, 5603, 5703

INTERNAL: 55.4SQM
TOTAL: 55.4SQM



COLLINS STREET



Disclaimer:

These plans are at design development stage and are provided for marketing purposes only. Design coordination with consultants is not complete in either the individual apartments or the overall building. Building tolerances; acoustic, thermal and decorative requirements; and facade interface details may impact layout and alter room dimensions. Furniture shown is for layout purposes only and not indicative of final selection. Pendant and floor lights indicated on plan are not included in the contract of sale. Operable window locations and sizes are indicative only and subject to change. Any areas shown or implied are indicative only and have been measured in accordance with the Property Council Australia guideline for measuring residential spaces.



NOT TO SCALE

COLLINS HOUSE

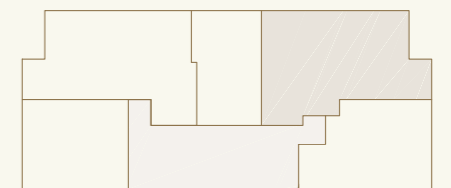
MELBOURNE

3 BED, 3 BATH

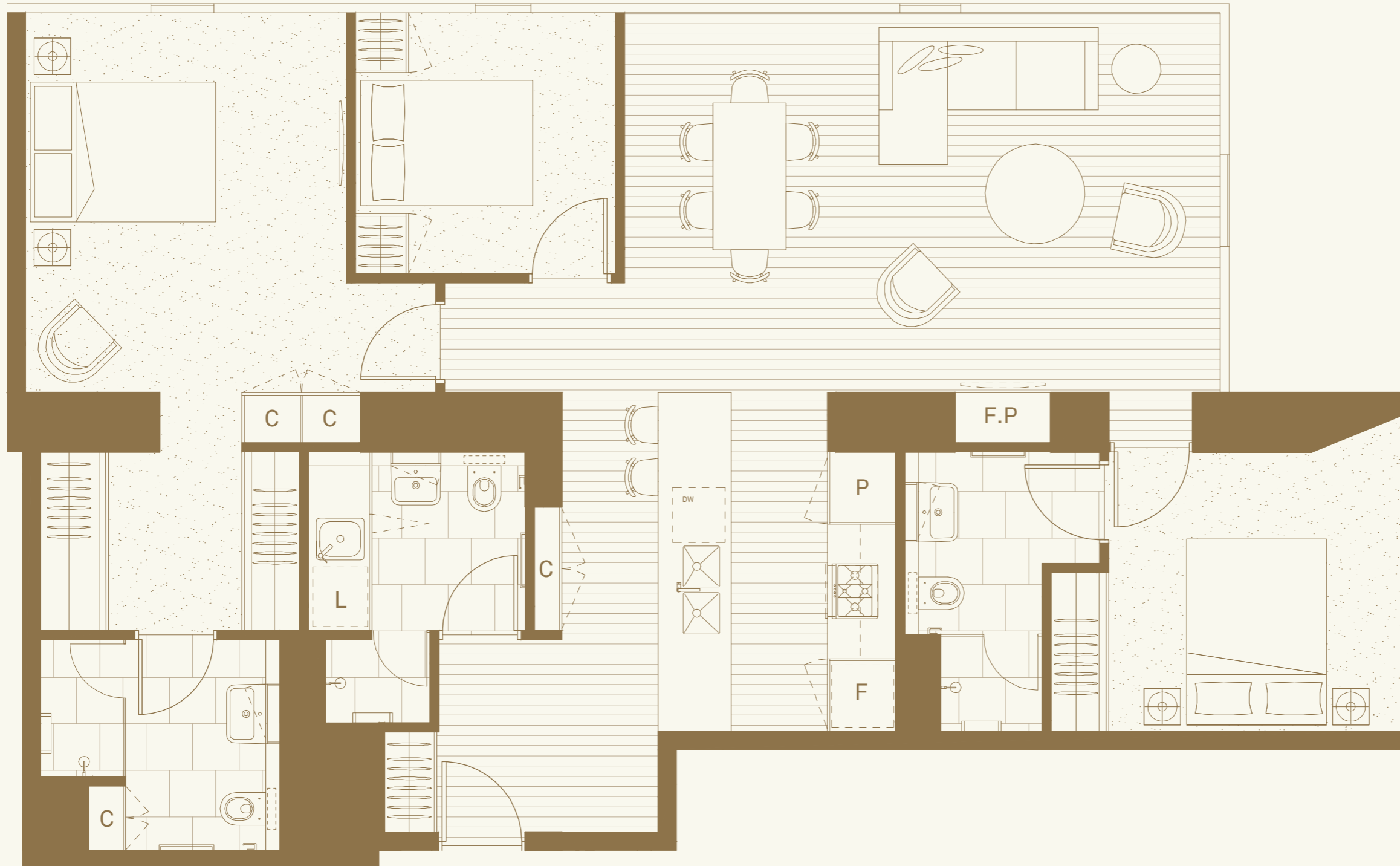
APARTMENT 04
TYPE CC-04

4604, 4704, 4804, 4904,
5004, 5104, 5204, 5304,
5404, 5504, 5604, 5704

INTERNAL: 116.5SQM
TOTAL: 116.5SQM



COLLINS STREET



Disclaimer:

These plans are at design development stage and are provided for marketing purposes only. Design coordination with consultants is not complete in either the individual apartments or the overall building. Building tolerances; acoustic, thermal and decorative requirements; and facade interface details may impact layout and alter room dimensions. Furniture shown is for layout purposes only and not indicative of final selection. Pendant and floor lights indicated on plan are not included in the contract of sale. Operable window locations and sizes are indicative only and subject to change. Any areas shown or implied are indicative only and have been measured in accordance with the Property Council Australia guideline for measuring residential spaces.



NOT TO SCALE

COLLINS HOUSE

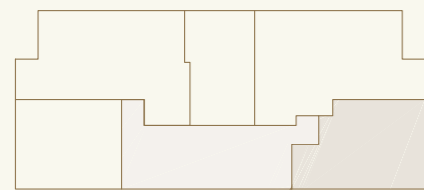
MELBOURNE

2 BED, 2 BATH

APARTMENT 05
TYPE CC-05

4605, 4705, 4805, 4905,
5005, 5105, 5205, 5305,
5405, 5505, 5605, 5705

INTERNAL: 75.6SQM
TOTAL: 75.6SQM



COLLINS STREET



Disclaimer:

These plans are at design development stage and are provided for marketing purposes only. Design coordination with consultants is not complete in either the individual apartments or the overall building. Building tolerances; acoustic, thermal and decorative requirements; and facade interface details may impact layout and alter room dimensions. Furniture shown is for layout purposes only and not indicative of final selection. Pendant and floor lights indicated on plan are not included in the contract of sale. Operable window locations and sizes are indicative only and subject to change. Any areas shown or implied are indicative only and have been measured in accordance with the Property Council Australia guideline for measuring residential spaces.



NOT TO SCALE

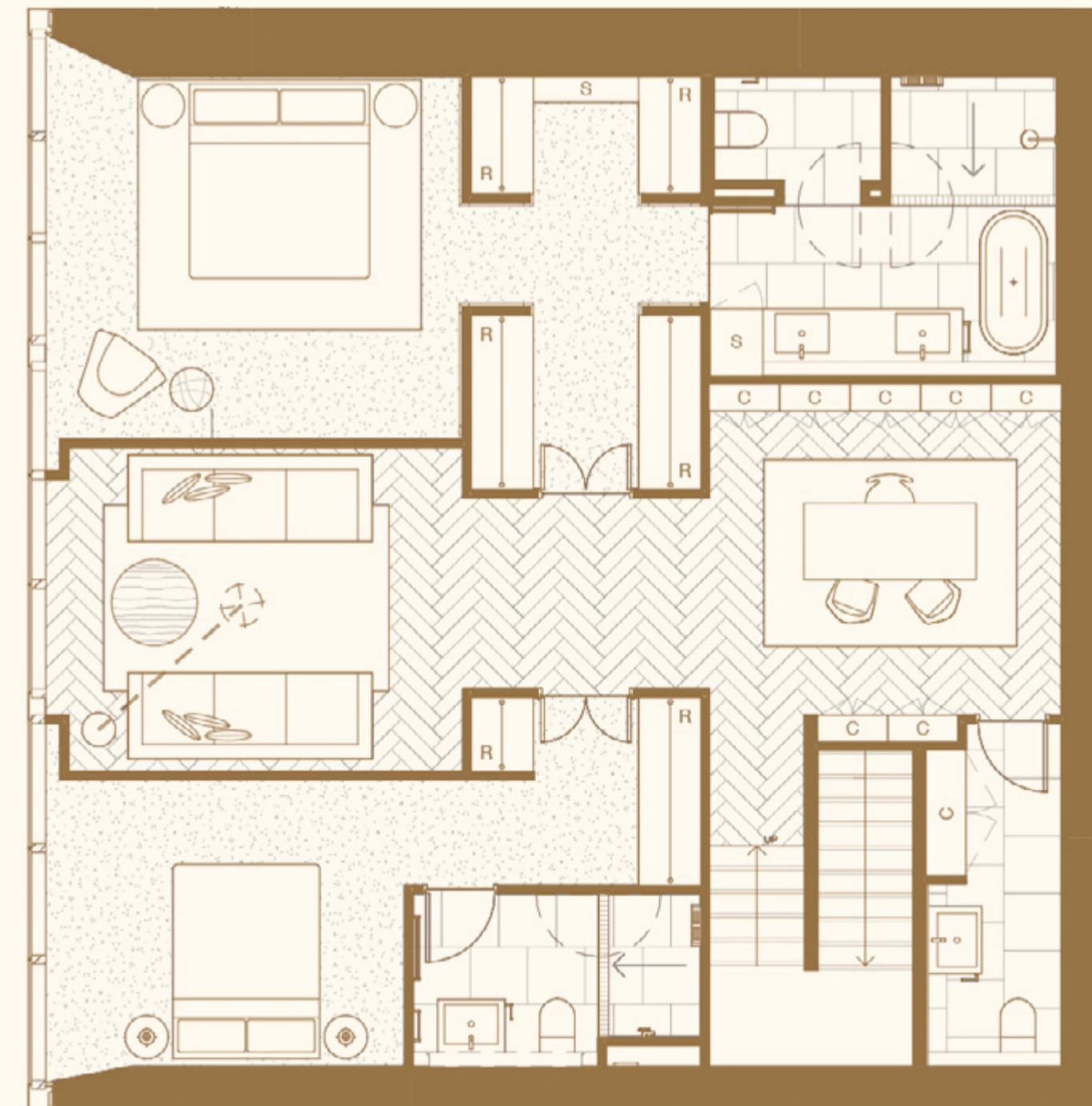
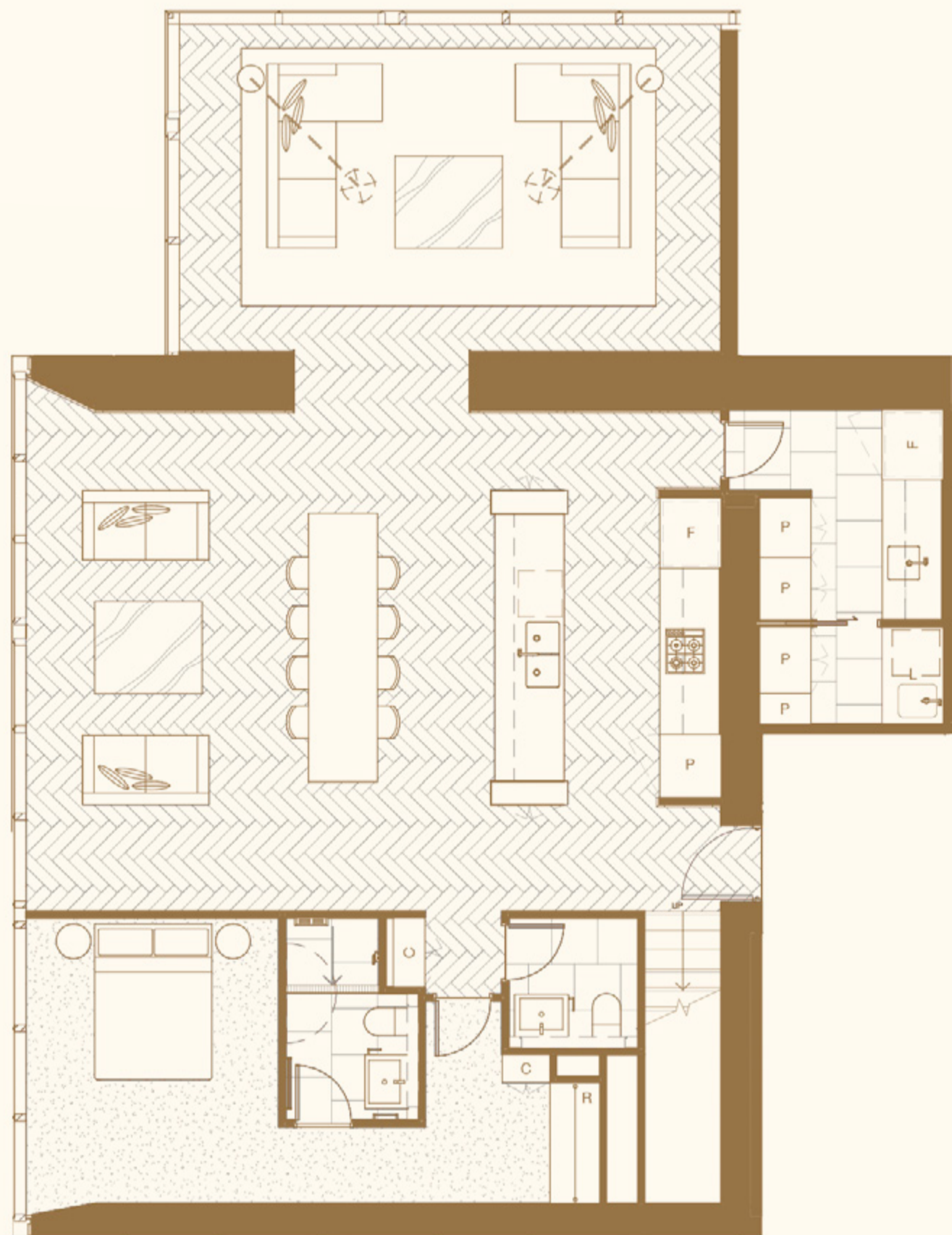
COLLINS HOUSE

PENTHOUSE

**3 BED, 3 BATH,
2 POWDER**

APARTMENT 5602
TYPE CC-04

LEVEL 56: 146.4SQM
LEVEL 57: 113.7SQM
TOTAL: 260.1SQM



COLLINS HOUSE

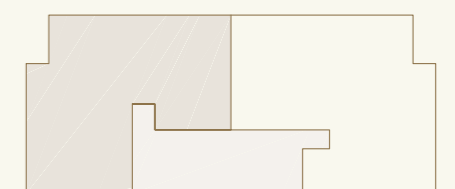
MELBOURNE

3 BED, 3 BATH, 1 STUDY
+ 1 POWDER ROOM

APARTMENT 01
TYPE CC-06

5801, 5901

INTERNAL: 208.8SQM
TOTAL: 208.8SQM



Disclaimer:

These plans are at design development stage and are provided for marketing purposes only. Design coordination with consultants is not complete in either the individual apartments or the overall building. Building tolerances; acoustic, thermal and decorative requirements; and facade interface details may impact layout and alter room dimensions. Furniture shown is for layout purposes only and not indicative of final selection. Pendant and floor lights indicated on plan are not included in the contract of sale. Operable window locations and sizes are indicative only and subject to change. Any areas shown or implied are indicative only and have been measured in accordance with the Property Council Australia guideline for measuring residential spaces.



NOT TO SCALE

COLLINS HOUSE

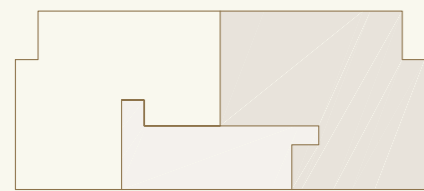
MELBOURNE

3 BED, 3 BATH, 1 STUDY
+ 1 POWDER ROOM

APARTMENT02
TYPE CC-07

5802, 5902

INTERNAL: 220.5SQM
TOTAL: 220.5SQM



COLLINS STREET



Disclaimer:

These plans are at design development stage and are provided for marketing purposes only. Design coordination with consultants is not complete in either the individual apartments or the overall building. Building tolerances; acoustic, thermal and decorative requirements; and facade interface details may impact layout and alter room dimensions. Furniture shown is for layout purposes only and not indicative of final selection. Pendant and floor lights indicated on plan are not included in the contract of sale. Operable window locations and sizes are indicative only and subject to change. Any areas shown or implied are indicative only and have been measured in accordance with the Property Council Australia guideline for measuring residential spaces.



NOT TO SCALE

